

Monthly highlights from your energy neighbor, PSE on Bainbridge Island.

[View this email in your browser](#)

PSE on bainbridge island



PSE Bainbridge Update • March 2018



Photo by Keith Brofsky

March has come in like a lion, and hopefully will go out like a lamb. In this issue, we catch up on some things PSE has been doing on Bainbridge Island and how the HORSE biodigester is doing.

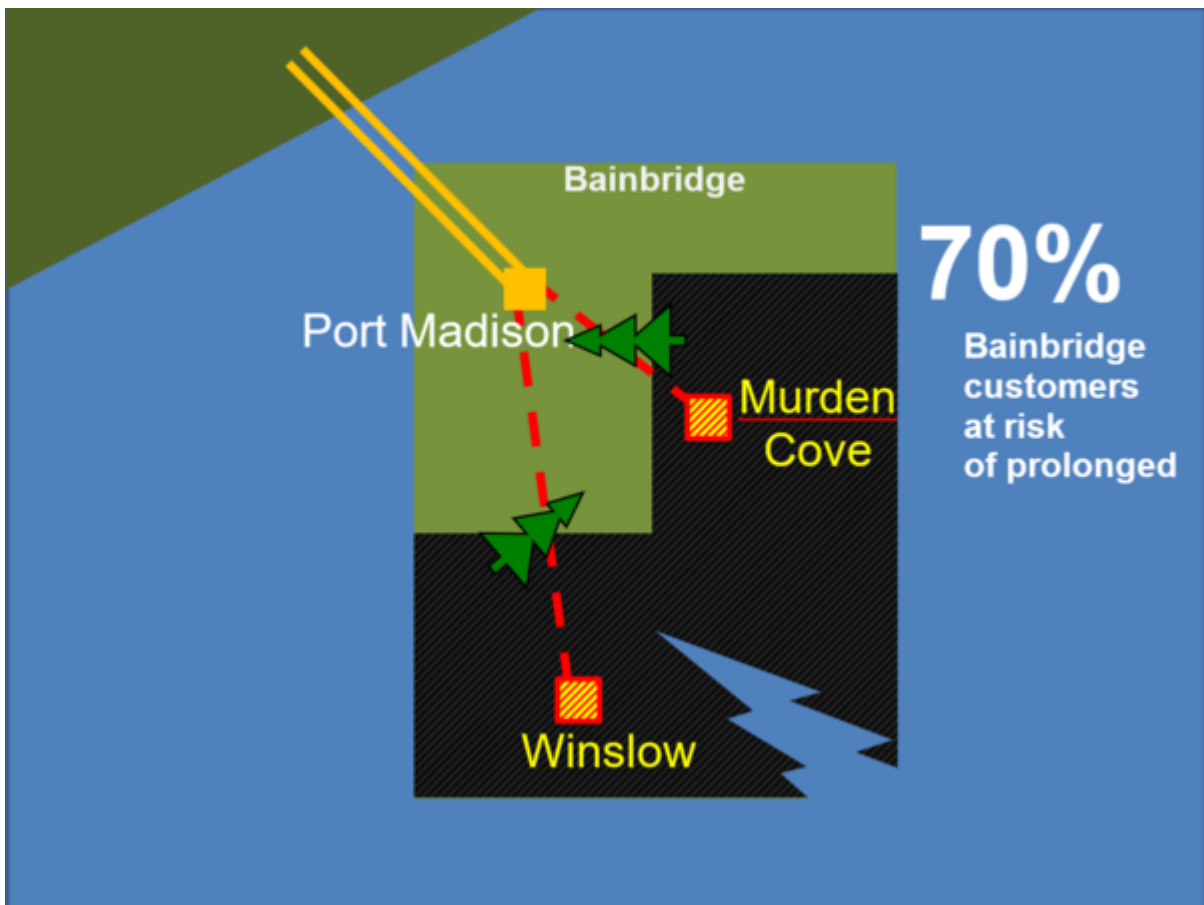


Illustration of why outages occur on Bainbridge Island (from Oct 2016 Town Hall)

Electric reliability

Back in October 2017, we met with community members to discuss potential plans for improving reliability on Bainbridge Island. We began a needs study early this year to discover what technical issues we need to solve. Following that, we will develop an alternatives study to analyze various options to solve the identified issues.

We are making good progress and intend to have our final draft ready this summer. We will convene another community touchpoint in the fall.



Annual BI Chamber of Commerce 2018 annual dinner

PSE honored at Chamber dinner

On March 3, PSE was honored with the Bainbridge Island Chamber of Commerce large business of the year award.

The event, hosted at the Wing Point Golf & Country Club, was an evening of good food, conversation and many awards. All award winners are listed below.

According to Rex Oliver, Chamber president and CEO, "PSE has shown dedication to safe, sustainable energy and the positive effect it is sure to have on our local communities. They also are a primary partner in the Island's disaster preparedness efforts and pioneered the HORSE recycling program at the Harbour Public House and now at Pleasant Beach Village."

A special moment in the evening came with the awarding of the posthumous award "In Memoriam". It was created for the late Frank Buxton, long-time Grand Old 4th parade announcer and co-founder of the Buxton-Ellis Most Humorous Parade Entry prize.

Congratulations to all of those nominated!

Membership awards for 2017

- Small Business of the Year – Fairy Tale Dental
- Medium Business of the Year – Bainbridge Gardens
- Large Business of the Year – Puget Sound Energy
- Sustainable Business of the Year – A Kitchen That Works
- Non-Profit of the Year – Bainbridge Community Foundation
- Citizen of the Year (and 2018 Grand Old 4th Parade Marshal) – Clarence Moriwaki



Chloe Halbert accepting her scholarship from Karen Brubeck, PSE outreach manager

Art scholarship winner announced

Also at the Chamber annual dinner, the winning entry of the 2018 Grand Old 4th poster contest was revealed. Bainbridge High School senior Chloe Halbert was awarded the \$1,000 scholarship by Karen Brubeck, community outreach manager at PSE. PSE is proud to be the sponsor of the annual art contest for the second year.



HORSE biodigester

HORSE enjoying its new pasture

In December 2017, the HORSE biodigester was welcomed to its new home at Pleasant Beach Village.

The HORSE (High-solids Organic-waste Recycling System with Electrical output) continues the three-way partnership that includes Pleasant Beach Village, Impact Bioenergy and PSE.

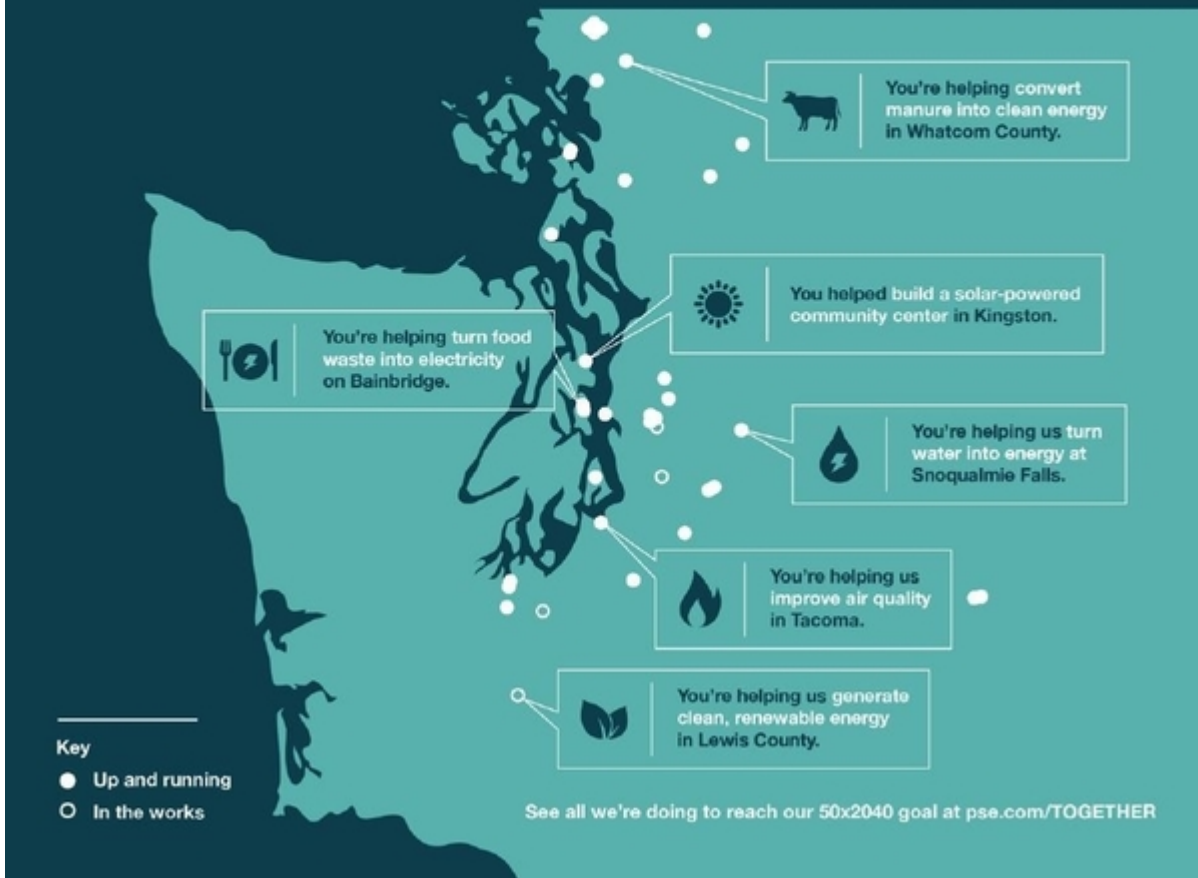
The biodigester has been operational since the middle of December, and is generating both renewable natural gas and probiotic liquid plant food. So far, it has produced 1,452 cubic feet of natural gas from 280 lbs. of food waste input.

Pleasant Beach Village is committed to using the natural fertilizer and the energy produced by the HORSE. The fertilizer is going to farms on the Island to grow organic produce here on Bainbridge Island. They also plan on capturing the electricity generated from HORSE and transfer it to portable renewable/rechargeable power banks to charge e-bikes, electric vehicles and a variety of electrical equipment used in the Village's daily operation.

This pilot project is a natural extension of PSE's ongoing interest in developing alternative sources of renewable energy. In 2004, PSE began partnering with developers on dairy digesters as part of its Green Power program. We currently purchase renewable energy from six dairy digesters that turn manure into methane to fuel an electric generator. In addition, PSE's Green Power program purchases renewable energy from a landfill gas digester in Pierce County; and we are involved in digester discussions in other communities.

"We know how important renewable energy is to Bainbridge Island residents," said Karen Brubeck, PSE outreach manager. "With one more year on the Island, we'll be able to learn much more about the HORSE's energy capabilities."

TOGETHER, we're creating a better energy future.



Did you see this in your March Bill?

PSE is your partner in lowering the carbon footprint.

Follow us on Facebook

PSE has a [Facebook page](#) for our work on Bainbridge Island. Be sure to like and follow us to keep informed about PSE on Bainbridge Island!

Connect
with us on
Facebook



Let us know what you think

Whether you have questions about our work on Bainbridge Island, the programs we offer or other questions about PSE's services, we want to hear from you. Please contact us at info@psebainbridge.com or call us toll-free at **1-888-878-8632**.

Thank you,

Your PSE Bainbridge Team

March 2018 • psebainbridge.com

[unsubscribe from this list](#) [update subscription preferences](#)

This email was sent to <<Email Address>>
[why did I get this?](#) [unsubscribe from this list](#) [update subscription preferences](#)
Puget Sound Energy · 10885 NE 4th St · Bellevue, Wa 98004 · USA

The MailChimp logo is displayed in a white, cursive font within a grey rectangular box.