

PSE on bainbridge island



PSE Bainbridge Update • August 2020



Pictured: View of ferry in Puget Sound against backdrop of Mount Rainier, as seen from Hawley Cove Park, Bainbridge Island

This month, we're updating you on projects occurring on the island and the ongoing community engagement process for the "missing link" transmission line. We're also sharing news about two organizations we proudly sponsored this year and some energy efficiency rebates. Thanks for reading!



PSE Foundation COVID-19 Response & Recovery Competitive Grants

As our communities face unprecedented challenges presented by COVID-19, we are finding new ways as a community to be together and lend a helping hand to our neighbors in need. For 2020, the [PSE Foundation](#) has launched a new \$400,000 competitive grant program to aid the community and our customers in response and recovery of the COVID-19 pandemic.

Nonprofit and public charity organizations located within PSE's 16-county service and operation areas can apply for a grant to be selected through a competitive process; **deadlines are Aug. 31 and Oct. 1** with funding awarded in October and December respectively. The program is seeking to help fund nonprofit organizations that are providing critical community services as well as fund the programs and services received by community members.

This has been a challenging time for Puget Sound Energy customers and communities, and the PSE Foundation is seeking to provide more flexible support for organizations that are stepping up to help. Together, the PSE Foundation and PSE have already contributed more than \$1.3 million towards mitigating impacts of COVID-19 across PSE's service area communities.

For more information on PSE Foundation grant guidelines and how to apply for funding, please visit us at psefoundation.org.



PSE has several offers to help residential and business customers save money and energy

Upgrade and save on energy-efficient products

Summer is the perfect time to upgrade and save on energy-efficient products with rebates from PSE! We have a variety of rebates and offers available to help you meet your energy efficiency goals.

Appliance rebates and offers: Given their frequency of use, your kitchen and laundry appliances should be as energy-efficient as possible—and you can use PSE's appliance programs to lower the cost. Whether you're upgrading to a more [energy-efficient unit](#) or looking to [recycle an older one](#), we've got you covered.

Energy-efficient lighting: When you buy select money-saving, ENERGY STAR® qualified LED light bulbs and fixtures at participating retailers, PSE gives you instant discounts right at checkout. Your new LEDs will lower your energy bills and we're happy to take your old bulbs off your hands. Look for the PSE logo at participating retail stores to verify that an instant discount is available for your item(s).

Water savings: Did you know heating water is the second-highest use of energy in your home? By installing an efficient shower head, faucet or faucet aerator, you can use less water and save more on your energy bill. Get an [instant discount](#) of up to \$10 on select [WaterSense®](#) products from participating retailers.

[Subscribe](#)[Past Issues](#)[Translate ▼](#)

50%! The higher incentives come with a generous project completion deadline of Dec. 21, 2020. The incentives are a limited time only – applications must be submitted by Sept. 1, 2020 – but know that you have ample time to get the job done. To learn more visit pse.com/businesslighting or call an Energy Advisor at **800-562-1482**.

For more information on PSE's rebates and offers, visit us online at pse.com/rebates.

Investing in electric reliability and grid modernization - project updates

Electric reliability on the island needs to be improved. In finding solutions, PSE committed to exploring new technologies. Our proposed plan is a unique solution designed for Bainbridge Island – combining new technologies and grid infrastructure to ensure safe, dependable power for families and businesses for years to come. We will partner with the community to implement these solutions.

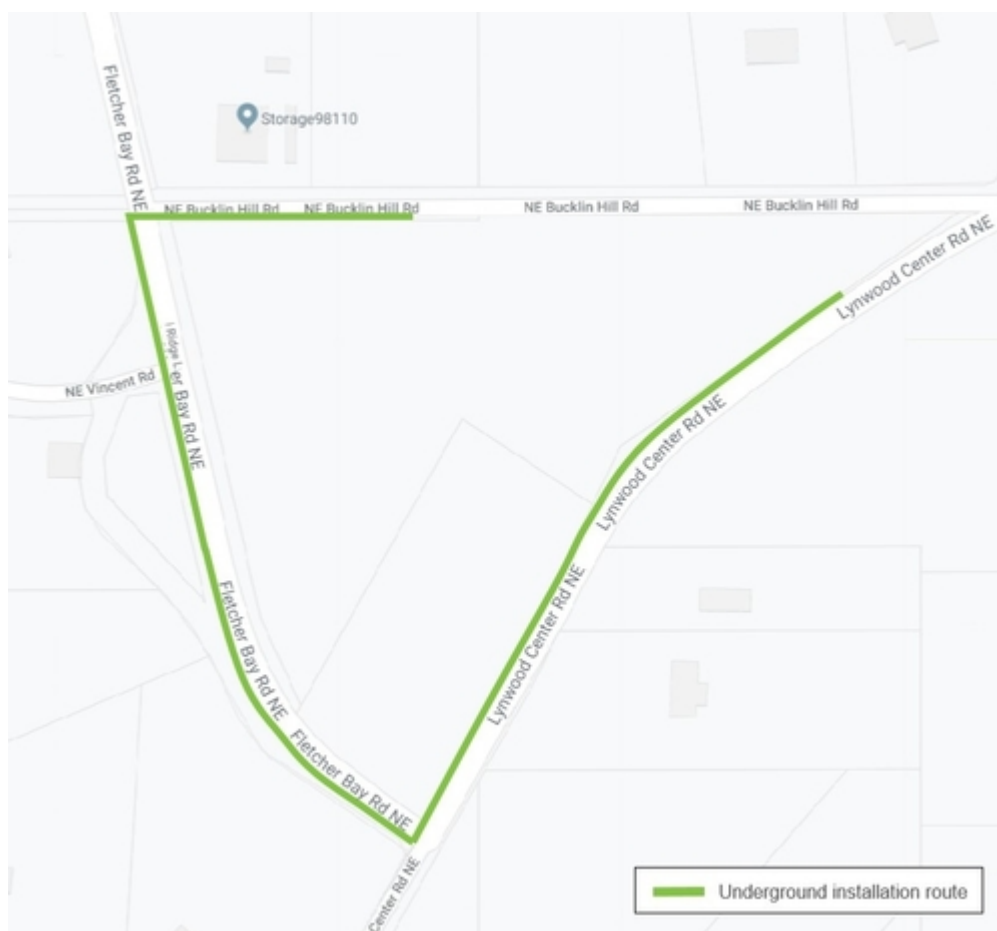


Upcoming information sessions for the

As part of our solution to improve reliability on the island, we're planning to build the "missing link" transmission line between the Murden Cove and Winslow substations. It's our goal to understand community values and interests around the new transmission line, so we've launched a community engagement process to gather input and feedback.

Before we hold the next Community Sounding Board (CSB) meeting in September, we want to provide you an opportunity to learn more about the new transmission line and PSE's solutions for increasing reliability on Bainbridge Island. The first information session will be on August 6 and cover the need for the transmission line as well as the project study area. Another information session will follow at a later date. See you soon!

Visit this page to learn more, including how to join the next CSB meeting: <https://psebainbridge.participate.online/>.



Fletcher Bay Road project complete!

In late 2019, PSE started the Fletcher Bay Road underground conversion project and the electric construction work wrapped up in May 2020. The final piece of work was hard

The aim of the project is to increase reliability by converting a section of overhead distribution line to underground in order to connect to an underground line on Bucklin Hill Road (the underground section of Bucklin Hill Road was constructed previously).

For more information on the Fletcher Bay Road underground conversion project, visit the project page [here](#).

PSE on Bainbridge

PSE feels strongly about being a good neighbor. We do this through our philanthropic commitment to the non-profit communities we serve. This month, we highlight two organizations we proudly sponsor in times of uncertainty during the COVID pandemic.



PSE team that participated in the virtual Fun Run hosted by Bainbridge Youth Services.

Pictured in order from left to right, bottom to top: Kierra, Témo, Alison, Diann, Karen, Renee, Shelby and Chad.

PSE runs for Bainbridge Youth Services!

Puget Sound Energy was proud to be a sponsor of the Fun Run hosted by Bainbridge Youth Services (BYS). This year the event went virtual and PSE joined in the fun!

We created a PSE team of sixteen people to walk, run or jog to support the BYS's mission of promoting the social and emotional well-being of adolescents and young adults in the Bainbridge area. It was a great opportunity to get moving individually and support a great



Preservation Partners Summer Celebration

We were so proud to partner with Bainbridge Island Land Trust on their recent Preservation Partners Summer Celebration by serving as one of their sponsors!

If you missed the event, you check out the online program at bi-landtrust.org/partners.

Follow us on Facebook

PSE has a [Facebook page](#) for our work on Bainbridge Island. Be sure to like and follow us to stay informed about PSE on Bainbridge Island!

Connect
with us on
Facebook



Let us know what you think

Whether you have questions about our work on Bainbridge Island, the programs we offer or other questions about PSE's services, we want to hear from you. Please contact us at info@psebainbridge.com or call us at **1-888-878-8632**.

Thank you,
Your PSE Bainbridge Team

[Subscribe](#)[Past Issues](#)[Translate ▼](#)

[unsubscribe from this list](#) [update subscription preferences](#)

This email was sent to <<Email Address>>

[why did I get this?](#) [unsubscribe from this list](#) [update subscription preferences](#)

Puget Sound Energy · 10885 NE 4th St · Bellevue, Wa 98004 · USA

