

[Subscribe](#)[Past Issues](#)[Translate ▼](#)[RSS](#)

Monthly highlights from your energy neighbor, PSE on Bainbridge Island.

[View this email in your browser](#)

PSE on bainbridge island



PSE Bainbridge Update • January 2020



Pictured: Lanterns used to light the path for attendees at Bloedel Reserve's Solstice Walk event.

In this newsletter, we're inviting you to join us for an online information session and apply for our Community Sounding Board. We're also sharing news about our 2020 Powerful Partners, of which Housing Resources Bainbridge is a recipient. Last, but not least, we're sharing project updates and recapping the safety presentation we delivered in December, and Bloedel Reserve Solstice Walks event. Thanks for reading!

modernization — project updates



Join us for an online information session

PSE is working to improve electric reliability and modernize the grid on Bainbridge Island. Our plan is a unique solution that combines new technologies and updated grid infrastructure to ensure safe, dependable power for families and businesses for years to come.

Join us for an online information session to learn more about two components of our

[Subscribe](#)[Past Issues](#)[Translate ▼](#)[RSS](#)

Event details

Wed., Jan. 29, 2020

6:30 – 7:30 p.m.

RSVP: pse.com/bainbridge

You'll receive an email with instructions on how to join the webinar once you RSVP.



Apply for PSE's Community Sounding Board by Jan. 21

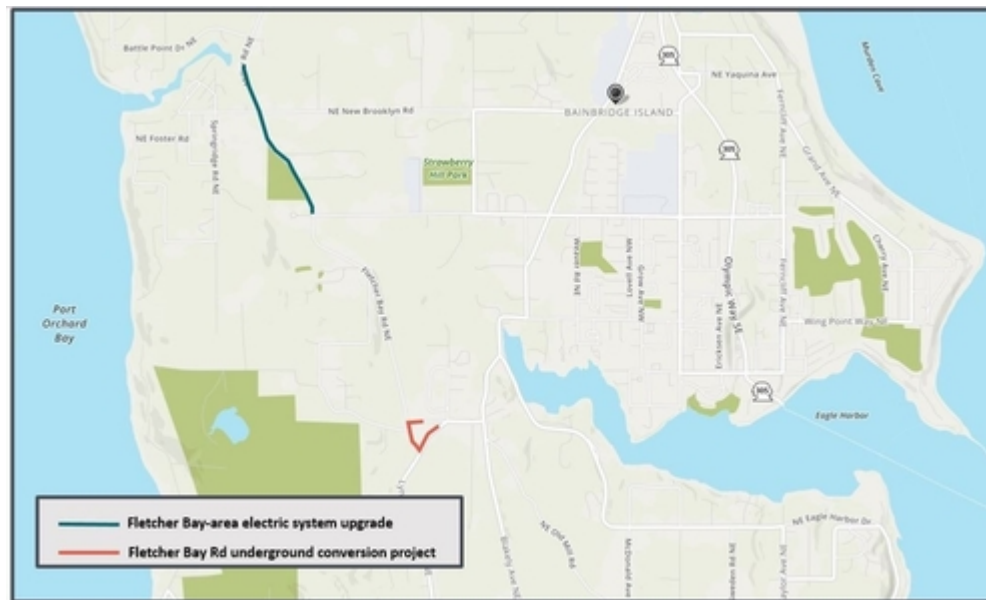
PSE is convening a Community Sounding Board (CSB) to help inform our routing process for a new transmission line to improve electric reliability on Bainbridge Island.

The CSB will consist of a diverse group of people to engage in focused discussions during the routing process to site a new transmission line within the [project study area](#). Members

Submit [your application](#) today. It's quick and easy to fill out, and can be accessed from your phone, tablet or desktop computer. Applications close on Jan. 21 and seats are limited.

To learn more about the new transmission line and how we're investing in reliability and modernizing the grid, visit pse.com/bainbridge.

Apply today!



Pictured: Project map showing the location of both projects

underway!

We've been working on the electric distribution system – the network of power lines that serve neighborhoods – to help improve electric reliability on Bainbridge Island.

In October 2019, we upgraded almost a mile of existing overhead power lines with tree wire. [Tree wire](#) is a specially-coated overhead wire that's designed to prevent an electric short (and subsequent outage) when tree limbs fall into power lines. By installing tree wire in other locations, we've helped reduce power outages related to falling tree branches by up to 95 percent. Learn more about the Fletcher Bay-area electric system upgrade [here](#).

In December 2019, crews began work on a four-month project to replace almost two miles of existing overhead wire with underground cable. We conducted a comprehensive assessment of the distribution system in this area, including historical reports of tree-related outages, and determined there would be a reliability benefit from relocating the existing lines underground. Learn more about the Fletcher Bay Rd underground conversion project [here](#).



Pictured: Opal, a Virginia Possum & Education Ambassador for West Sound Wildlife Shelter (WSWS). WSWS was selected as a Powerful Partner in 2017 and 2019.

PSE helps families and the environment through its ‘Powerful Partnerships’ program

We are proud to continue our commitment to help the environment and human services organizations through our [Powerful Partnerships](#) program, now in its fourth year. This year, we'll distribute \$200,000 across 24 nonprofit organizations within our 6,000 square mile service area.

On Bainbridge Island, we look forward to working with [Housing Resources Bainbridge](#) (HRB) throughout 2020. HRB was selected as a Powerful Partner for their valuable work

[Subscribe](#)[Past Issues](#)[Translate ▼](#)[RSS](#)

organization.

In previous years, we've partnered with the following organizations on Bainbridge Island to support their mission through this program.

- [West Sound Wildlife Shelter](#), 2019 & 2017
- [Helpline House](#), 2018
- [Bainbridge Youth Services](#), 2019

PSE is committed to working together to create a better energy future. Partnering with community organizations like these, helps PSE engage more people in that mission.



Pictured: Matt Clifton, during the high-voltage demonstration. Note the electrical arc!

High Voltage Safety presentation recap

On December 12, 2019, we partnered with the City of Bainbridge Island to host a presentation on electrical safety for residents and businesses. Using videos and a real-life electrical demonstration, attendees learned how to stay safe around power lines.

A reminder to our readers who didn't attend the demonstration:

Safety first. Never touch or go within 35 feet of downed power lines because they might be energized. Call PSE at 1-888-225-5773 or call 911 to report problems.



Pictured: Attendees at the Solstice Walks event held on January 11.

Bloedel Reserve Solstice Walks

PSE was proud to sponsor the [Solstice Walks](#) hosted by Bloedel Reserve. There were four walks across two days, and both events sold out! Attendees enjoyed walking the majestic grounds of the Reserve, and soaking in the beauty, quiet and solace.

We look forward to the other exciting events that Bloedel Reserve will bring to the

[Subscribe](#)[Past Issues](#)[Translate ▼](#)[RSS](#)

Follow us on Facebook

PSE has a [Facebook page](#) for our work on Bainbridge Island. Be sure to like and follow us to stay informed about PSE on Bainbridge Island!

Connect
with us on
Facebook



Let us know what you think

Whether you have questions about our work on Bainbridge Island, the programs we offer, or other questions about PSE's services, we want to hear from you. Please contact us at info@psebainbridge.com or call us at **1-888-878-8632**.

Thank you,

Your PSE Bainbridge Team

January 2020 • psebainbridge.com

[unsubscribe from this list](#) [update subscription preferences](#)

[Subscribe](#)

[Past Issues](#)

[Translate ▼](#)

[RSS](#)

Puget Sound Energy · 10885 NE 4th St · Bellevue, Wa 98004 · USA

