

PSE on bainbridge island



PSE Bainbridge Update • January 2021



Pictured: PSE's Wild Horse wind and solar facility in Kittitas County.

Happy New Year and welcome to 2021. Read on for an announcement about [PSE's "Beyond Net Zero Carbon by 2045"](#) goal, a recap of the Jan. 21 [community workshop](#), and [an article outlining](#) an innovative invention from a PSE employee that powered crews during their recent storm response. Thanks for reading!

PSE sets "Beyond Net Zero Carbon by 2045" goal

We're excited to share an aspirational goal to be a Beyond Net Zero Carbon company by

“Climate change is an existential threat that cannot be ignored, and we are doing our part to move further and faster to save our planet,” said PSE President and CEO Mary Kipp. “Our customers have been asking for cleaner energy; and by setting this aspirational goal, we are putting our stake in the ground. We will work with our customers, as well as our lawmakers and regulators, to push a path forward, based on data and facts, which will drive significant and meaningful change.”

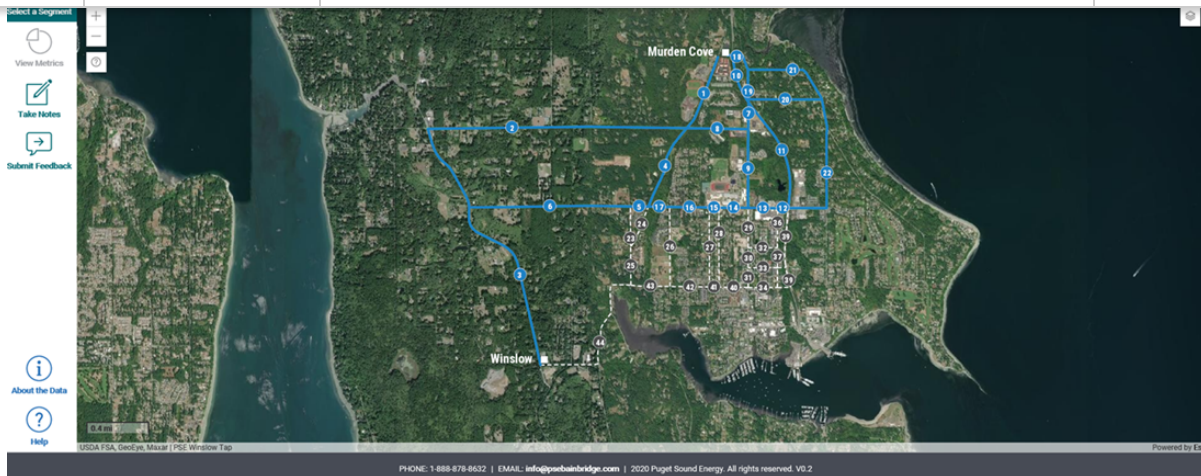
A critical component will be balancing clean energy goals with customer expectations for uncompromised reliability, safety and affordability. We’re committed to ensuring that all customers and communities have access to, and benefit from, the transition to a clean energy future. The challenge to protect the most vulnerable and remain sustainable will necessitate healthy and complementary electric and natural gas energy systems, as well as other technologies that may not yet be commercially feasible, to maintain both affordability and reliability.

Knowing the complexity of the issues involved and the need to meet many different interests, we are convening an external advisory committee with representation from a diverse set of community members, partners, technical experts and others.

Read our [commitments and aspirational goals](#) and our Beyond Net Zero Carbon by 2045 [white paper](#).

Investing in electric reliability and grid modernization - project updates

Electric reliability on the island needs to be improved. In finding solutions, PSE committed to exploring new technologies. Our proposed plan is a unique solution designed for Bainbridge Island – combining new technologies and grid infrastructure to ensure safe, dependable power for families and businesses for years to come. We will partner with the community to implement these solutions.

[Subscribe](#)[Past Issues](#)[Translate ▼](#)

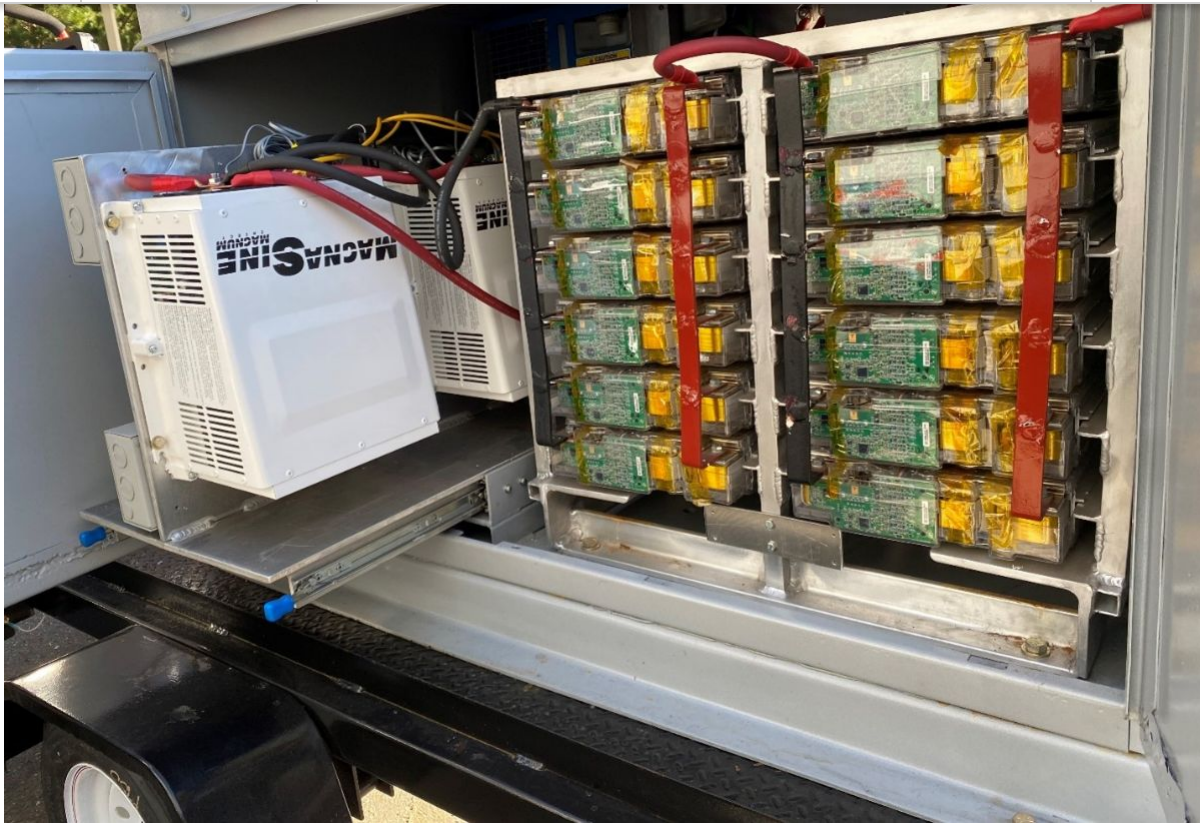
Segment Explorer tool launched at the "missing link" community workshop

We were pleased to see so many of you at last Thursday evening's community workshop, where we shared information about the "missing link" [transmission line project](#). Andy Wappler, Vice President of Customer Operations and Communications, shared information about the need for the project and took questions from the community. Andy Swayne, Senior Municipal Liaison Manager, and Kirk Moughamer, from HDR Inc., led a discussion about the routing process and PSE's commitment to engaging the community throughout the life of the project. View the presentation [here](#).

During the breakout group sessions we had great conversations with 96 attendees. A common theme we heard from attendees is that that electric reliability on the Island needs to be improved, and that this project should be prioritized by PSE. We also heard interest in trees, how PSE protects the environment during construction, co-locating the "missing link" transmission line with trails and bike paths, understanding restrictions with siting a power line across State Route 305, recognizing that "feel" for each segment must also be evaluated "on the ground," and understanding cost (to name a few). We also heard questions asking if it was possible to build the new line underground.

Launching the interactive Segment Explorer was an exciting milestone for the project and we encourage you to spend time learning about the route segments under consideration and sharing your feedback via the tool. **The interactive online tool is available online until 5 p.m. on Friday, February 12.** Visit psebainbridge.participate.online to access the Segment Explorer and share your feedback.

Thanks for the great conversation, Bainbridge!



Pictured: the ECO-PAC portable battery pack.

The ECO-PAC powers Kitsap storm staging area

After heavy winds and rain swept through the Puget Sound on Tuesday, January 12, more than 17,800 customers in Kitsap County were without power on Wednesday morning. As our staff and field crews worked tirelessly to restore service in that area, they got an extra boost of energy from the ECO-PAC portable battery pack, which was used by crews at an outdoor storm response staging area in Kitsap.

The unique innovation was invented by PSE employee Adam Stecker. His idea was conceived while managing new electric connections for construction projects on Bainbridge Island. You may recall seeing the ECO-PAC in action at the 2019 Grand Ole Fourth event, or reading about it in a past [newsletter](#).

Housed in a weatherproof trailer, the system uses recycled Tesla batteries to provide power in lieu of a generator. While Adam's original project wasn't specifically designed with a pandemic in mind, it's the perfect tool for supplying back-up power at our socially-distanced, outdoor storm response staging areas.

By replacing a diesel generator, ECO-PAC also reduces greenhouse gas emissions and

[Subscribe](#)[Past Issues](#)[Translate ▼](#)

Follow us on Facebook

PSE has a [Facebook page](#) for our work on Bainbridge Island. Be sure to like and follow us to stay informed about PSE on Bainbridge Island!

Connect
with us on
Facebook



Let us know what you think

Whether you have questions about our work on Bainbridge Island, the programs we offer or other questions about PSE's services, we want to hear from you. Please contact us at info@psebainbridge.com or call us at **1-888-878-8632**.

Thank you,
Your PSE Bainbridge Team

January 2021 • psebainbridge.com

[unsubscribe from this list](#) [update subscription preferences](#)

This email was sent to <<Email Address>>

[why did I get this?](#) [unsubscribe from this list](#) [update subscription preferences](#)

Puget Sound Energy · 10885 NE 4th St · Bellevue, Wa 98004 · USA

