

PSE on bainbridge island



PSE Bainbridge Update • June 2020



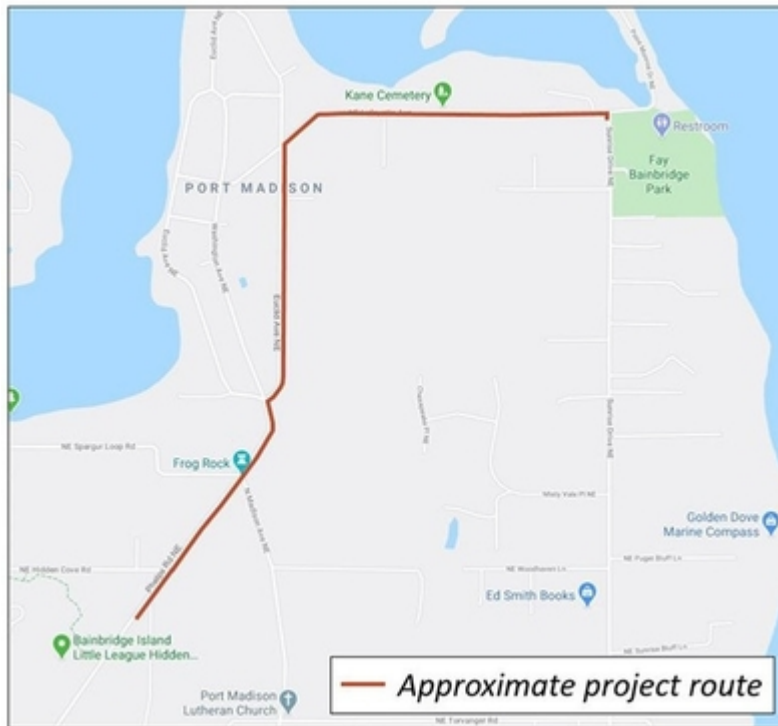
Pictured: Adirondack chair on Bainbridge Island beach

This month, we're updating you on projects occurring on the island and the ongoing community engagement process for the "missing link" transmission line. We're also sharing news about two organizations we are proudly sponsoring this year. Thanks for reading!

Investing in electric reliability and grid modernization - project updates

Electric reliability on the island needs to be improved. In finding solutions, PSE committed to exploring new technologies. Our proposed plan is a unique solution designed for

community to implement these solutions.



Survey work begins for NE Lafayette Avenue project

We've begun survey work for an upcoming electric distribution project in the vicinity of Port Madison. The project is aimed at improving reliability on the island by replacing aged overhead electric wire with [tree wire](#), as well as replacing utility poles and related equipment.

This summer you may see PSE project managers as well as our service partner, Potelco, out in the area doing survey work to inform the design of the project. Construction is anticipated to begin in 2021.

For more information on the NE Lafayette Avenue project, visit the project page [here](#).



Thanks for joining our first Community Sounding Board meetings

Trails, use of existing utility corridors, and safety – just a sampling of the various community values we’ve heard about since launching the community engagement process for routing the new “missing link” transmission line.

As part of our solution to improve reliability on the island, we’re planning to build the “missing link” [transmission line](#) between the Murden Cove and Winslow substations. It’s our goal to understand community values and interests around the new transmission line, so we’ve launched a community engagement process to gather input and feedback. Community involvement opportunities include a Community Sounding Board (CSB), future community workshops, online engagement, and a comment form where community members can provide input and feedback 24/7, as well as by email and phone.

CSB meetings began in May in an online format, and we’ve already had some great conversations! Keep up to date with the CSB by checking out the past materials posted on our [website](#) or by joining the next meeting in September. Community members are always welcome to listen and provide brief public comment.

Upgrade project



Bainbridge

Through our Meter Upgrade project, we're updating all of our metering equipment across our entire service area to the new industry standard technology.

Our current metering system, automated meter reading (AMR), is approaching the end of its projected lifespan. Therefore, we are currently making the switch to advanced metering infrastructure (AMI), which is the new industry standard.

Exchanging meters is a simple process, and our goal is to complete the upgrade with minimal disruption to our customers. The work at your residence will entail removing your current meter and replacing it with a new AMI meter. Your power could be briefly interrupted during the swap – generally for less than five minutes.

Be sure to watch your mail and email boxes for more information about your impending exchange. If we have your phone number on file, you will also get an automated reminder call a few days before we visit your residence.

For more information on the Meter Upgrade project, please visit pse.com/meterupgrade.

PSE on Bainbridge

PSE feels strongly about being a good neighbor. We do this through our philanthropic commitment to the non-profit communities we serve. This month, we highlight two organizations we proudly sponsor in times of uncertainty during the COVID pandemic.

Subscribe

Past Issues

Translate ▼



BAINBRIDGE ISLAND
LAND TRUST
 FOR EVERYONE. FOREVER.

Bainbridge Island Land Trust

This year PSE is delighted to sponsor The Preservation Partners Summer Celebration.

PSE is proud to support The Bainbridge Island Land Trust in their mission is to preserve and steward the diverse natural environment of Bainbridge Island for the benefit of all.

Join Bainbridge Island Land Trust online for their 12th Summer Celebration fundraiser on July 18 at 5:00 p.m.

Find more information online at bi-landtrust.org/partners.

Follow us on



Bainbridge Youth Services Fun Run

PSE proudly supports Bainbridge Youth Services (BYS). Join in the fun!

Money raised by this virtual fun run over 4th of July weekend goes directly to BYS.

BYS is a non-profit organization that provides professional, confidential and free counseling to Bainbridge and North Kitsap students age 13 to 21.

More information online at bifunrun.org.

Subscribe

Past Issues

Translate ▼

PSE has a [Facebook page](#) for our work on Bainbridge Island. Be sure to like and follow us to stay informed about PSE on Bainbridge Island!

with us on
Facebook



Let us know what you think

Whether you have questions about our work on Bainbridge Island, the programs we offer or other questions about PSE's services, we want to hear from you. Please contact us at info@psebainbridge.com or call us at 1-888-878-8632.

Thank you,
Your PSE Bainbridge Team

June 2020 • psebainbridge.com

[unsubscribe from this list](#) [update subscription preferences](#)

This email was sent to <<Email Address>>

[why did I get this?](#) [unsubscribe from this list](#) [update subscription preferences](#)

Puget Sound Energy · 10885 NE 4th St · Bellevue, Wa 98004 · USA

