

PSE on bainbridge island



PSE Bainbridge Update • May 2021



PSE owns and operates [three large wind farms](#) in Washington state; together, these facilities produce up to 772 megawatts of electricity, enough to meet the power demands of nearly 165,000 homes, making us the fourth-largest utility generator of wind power in the U.S.

This month we're sharing a recap of a recent online community workshop and asking for your feedback on [route options](#) for the "missing link" transmission line project. We're also highlighting the work of a handful of incredible organizations that support the Bainbridge Island community and [asking for your feedback](#) on our Clean Energy Implementation Plan as we work towards a Beyond Net Zero Carbon future by 2045.

Investing in electric reliability and grid modernization - project updates

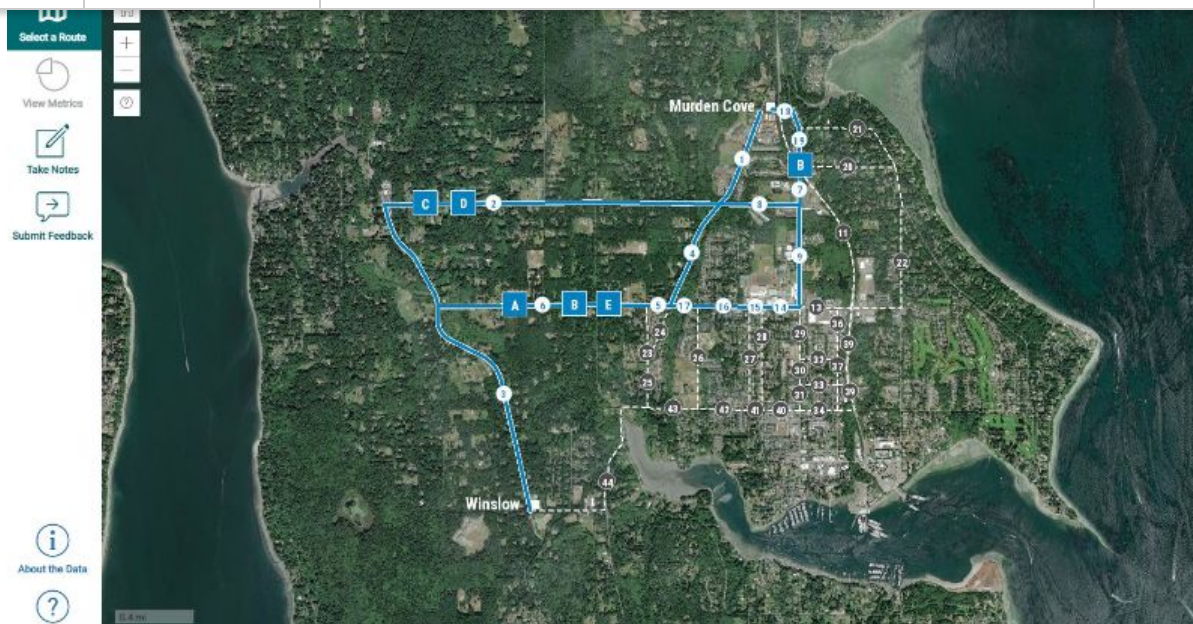
Electric reliability on the island needs to be improved. In finding solutions, PSE committed to exploring new technologies. Our proposed plan is a [unique solution designed for Bainbridge Island](#) – combining new technologies and grid infrastructure to ensure safe, dependable power for families and businesses for years to come. We will partner with the community to implement these solutions.



PSE shares "missing link" route options at second online community workshop

On May 3, PSE hosted a second [online community workshop](#) where we shared the route options under consideration for the ["missing link"](#) transmission line project. The new transmission line is a critical component of PSE's plan to improve electric service reliability, reducing the frequency and duration of power outages for customers on Bainbridge Island.

PSE heard from dozens of residents at this workshop, and we appreciate the community's questions and feedback about this project and the route options being considered. We encourage everyone to visit the online Route Explorer tool to learn more about the different route options and share your feedback.



Pictured: PSE's Route Explorer tool, available at psebainbridge.participate.online now through June 2.

Don't wait! Share your feedback on route options for the “missing link” project by June 2

After the May 3 workshop, PSE launched an interactive online [Route Explorer tool](https://psebainbridge.participate.online) designed to allow you to review and engage with the route options to provide your feedback. After June 2, the project team will review all feedback shared and work towards identifying a preferred route.

Visit the Route Explorer now to:

- Review the route options under consideration for the new transmission line.
- Explore the routing criteria PSE is using to evaluate route options.
- Compare route options using available data and metrics.
- Submit your feedback on the route options.

You can also share your feedback without using the Route Explorer by leaving a voice message at 1-888-878-8632, emailing info@psebainbridge.com, or using the [comment form](#) on our website.

To take a closer look at the engagement process for the project, click [here](#). Once PSE has selected a preferred route, there will be more opportunities to engage with the project. We're committed to keeping the community informed of our progress on this critical infrastructure project.

PSE on Bainbridge Island

PSE feels strongly about being a good neighbor. We do this through our philanthropic commitment to the nonprofit communities we serve.



Money where it matters! Rotary Auction & Rummage Sale back for 2021

PSE is thrilled to support this year's online auction from the Rotary Club of Bainbridge Island! A local institution, PSE has supported the annual auction & rummage sale for many years as they've worked to turn generously-donated items from the community into dollars for good.

100% of the proceeds from the auction & rummage sale are returned to the community, making an impact in the lives of real people in many ways such as:

- Funding community grants to nonprofit organizations.
- Building large community projects such as parks and sports fields.
- Providing college scholarships to local students.
- Funding international humanitarian projects such as drilling wells in Uganda and providing sanitation equipment in Guatemala.
- Addressing the local impact of COVID-19.

Online item donations start on Tuesday, June 1, so start your spring cleaning now! Buyers can preview items for auction or sale on June 23, and bidding/buying starts on June



Photo courtesy of Rockaway Bluff Preserve © Sue Larkin

Highlighting the Bainbridge Island Land Trust

The Bainbridge Island Land Trust is working to save another spectacular Island landmark – the 35-acre [Rockaway Bluff Preserve](#) – and they are looking to the community to help make it happen. This large and unique forested plateau is the next acquisition in the Stand for the Land campaign and represents the core of the upland forest residents and visitors see as they approach the Island on the Seattle-Bainbridge ferry. This Preserve will serve as a critical refuge for an abundance of wild creatures, including at least 82 bird species dislodged from habitat in the great Puget Sound region.

“The Land Trust appreciates the continued and generous support from members of our community, including local businesses, in our effort to protect, conserve, and nurture the Island’s natural landscapes for the benefit of all. We can’t let up on our pace to protect what remains”, said Jane Stone, Executive Director.

PSE is proud to support the Land Trust's work to protect and serve nearly 1,500 acres of shorelines, streams, wetlands, forests, and meadows on Bainbridge Island. These private and public natural places protect some of the most ecologically significant habitats on



Photo courtesy of Bloedel Reserve.

Reflection and contemplation at Bloedel Reserve

PSE is excited to share our support for Bainbridge Island's Bloedel Reserve, an internationally known, experiential public garden and forest preserve with approximately 150 acres of woods, sculpted landscapes, meadows, ponds, and wildlife habitats. The grounds were developed by Virginia and Prentice Bloedel who purchased the property in the 1950s as a summer retreat, developed the extensive landscapes, and opened the Reserve to the public in 1988. Since then, Bloedel Reserve has continued to evolve, earning loyal visitors and horticultural accolades along the way.

"During the COVID crisis, we've learned just how important Bloedel Reserve is to our community. Having a place to immerse yourself in nature isn't a luxury; it is a necessity for well-being. This is why we are especially grateful for support from Puget Sound Energy. As a Founding Business Partner, PSE's contributions are helping to keep the Reserve open and accessible to all", shared Edward Moydell, The Richard A. Brown President & CEO of Bloedel Reserve.

Bloedel Reserve is open year-around, Tuesday-Sunday, from 10 AM to 5 PM. Reserve

staff. Masks and advanced ticket purchase are required for visits. Purchase tickets online at bloedelreserve.org/tickets.

PSE & clean energy



Be part of the clean electricity transformation and take our survey by June 1

Help us include customer and community values in our Clean Energy Implementation Plan (CEIP) as we strive for a Beyond Net Zero Carbon future by 2045. Take our [survey](#) by June 1 to help PSE understand the kinds of benefits you and your community want to see in our clean electricity future together.

The CEIP is one of many steps we are taking to build a more equitable and sustainable clean electricity future for our region. Get involved and learn more at cleanenergyplan.pse.com.

[Subscribe](#)[Past Issues](#)[Translate ▼](#)

Facebook

PSE has a [Facebook page](#) for our work on Bainbridge Island. Be sure to like and follow us to stay informed about PSE on Bainbridge Island!

Connect
with us on
Facebook



Let us know what you think

Whether you have questions about our work on Bainbridge Island, the programs we offer or other questions about PSE's services, we want to hear from you. Please contact us at info@psebainbridge.com or call us at **1-888-878-8632**.

Thank you,
Your PSE Bainbridge Team

May 2021 • psebainbridge.com

[unsubscribe from this list](#) [update subscription preferences](#)

This email was sent to <<Email Address>>

[why did I get this?](#) [unsubscribe from this list](#) [update subscription preferences](#)

Puget Sound Energy · 10885 NE 4th St · Bellevue, Wa 98004 · USA

