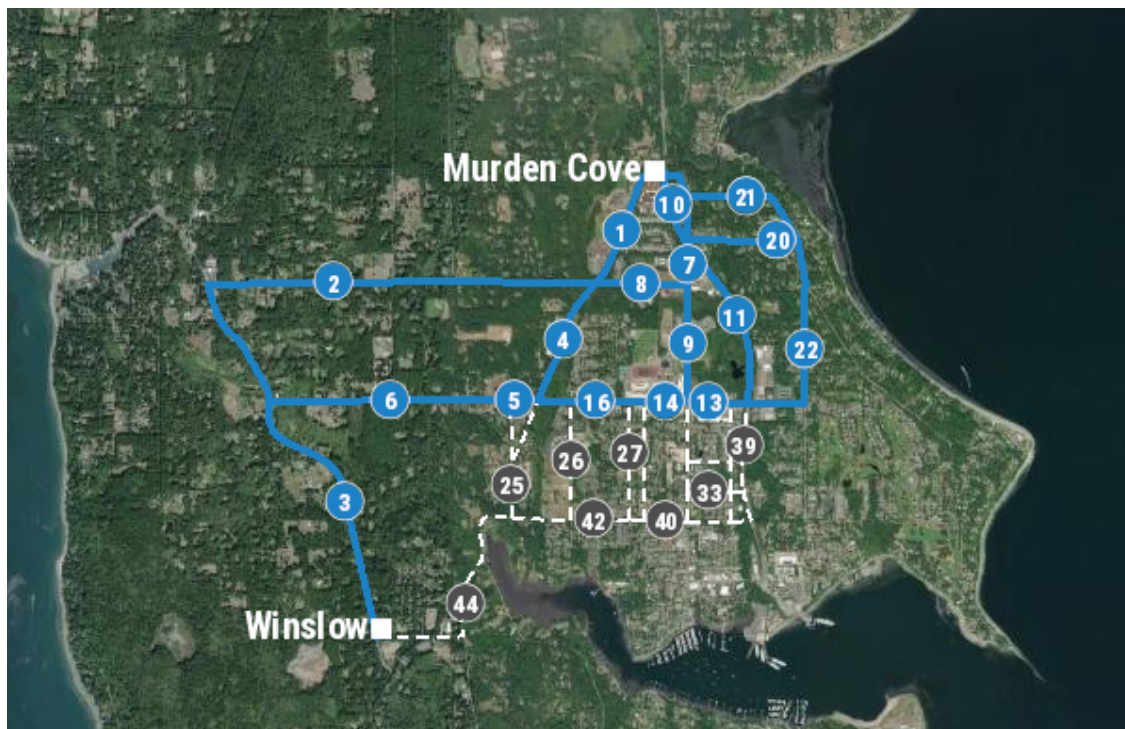


PSE on bainbridge island



PSE Bainbridge - The Segment Explorer is now available!



Take a closer look at route segments through the Segment Explorer!

Visit our [online open house](#) by Feb. 12 to share your feedback to inform route segments using the interactive Segment Explorer. By visiting this page you'll also be able to review the project study area map, learn about the project, and how we're engaging with the community to implement this solution.

As one part of our solution to improve electric reliability on Bainbridge Island, we're planning to build the "[missing link](#)" [transmission line](#) between the Murden Cove and Winslow substations. The new power line will create a transmission "loop", which means all substations will be connected to two transmission lines. If one line to a substation experiences a power outage, the other line can still feed the substation and provide power to customers.

[Subscribe](#)

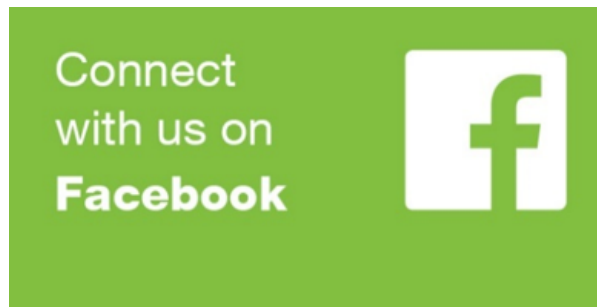
[Past Issues](#)

[Translate](#) ▼

Please let us know if you're facing barriers accessing the online Segment Explorer. Send us an email to info@psebainbridge.com.

Follow us on Facebook

PSE has a [Facebook page](#) for our work on Bainbridge Island. Be sure to like and follow us to stay informed about PSE on Bainbridge Island!



Let us know what you think

Whether you have questions about our work on Bainbridge Island, the programs we offer or other questions about PSE's services, we want to hear from you. Please contact us at info@psebainbridge.com or call us at **1-888-878-8632**.

Thank you,
Your PSE Bainbridge Team

January 2021 • psebainbridge.com

[unsubscribe from this list](#) [update subscription preferences](#)

This email was sent to <<Email Address>>
[why did I get this?](#) [unsubscribe from this list](#) [update subscription preferences](#)
Puget Sound Energy · 10885 NE 4th St · Bellevue, Wa 98004 · USA



