

# Foss Corner to Port Madison 115 kV transmission line upgrade

The existing 115 kV transmission line between PSE's Foss Corner substation on the Kitsap peninsula and the Port Madison substation on Bainbridge Island is approaching its capacity, straining the local electric system and making it difficult to reliably meet the needs of our existing customers.

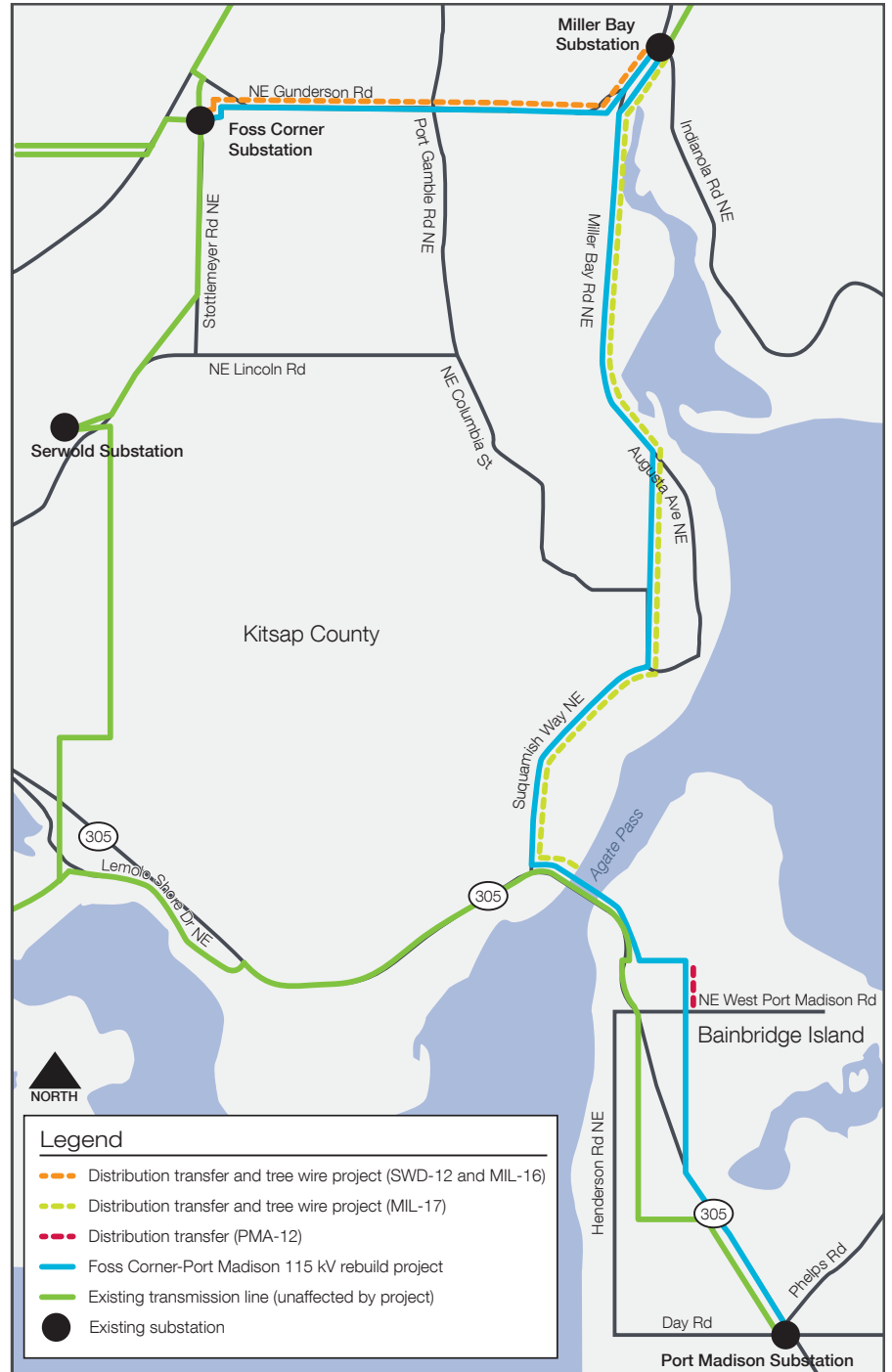
We are planning to rebuild the existing transmission line with new wood poles and higher-capacity 115 kV wire, which will alleviate the strain on the system and improve electric reliability for customers in northeast Kitsap County and Bainbridge Island.

## Construction

Construction is planned to take place in two phases:

- **Phase 1:** PSE will rebuild the line between Miller Bay substation and Agate Pass.
- **Phase 2:** PSE will rebuild the line between Foss Corner substation and Miller Bay substation and between Agate Pass and Port Madison substation.

Construction is expected to begin in April 2016 and continue to mid-September; all work is anticipated to be completed by October. During construction, some customers may experience a brief planned power outage as we transfer the conductors to the new poles. We know being without power is inconvenient; if a planned power outage is necessary for this project, we will work to provide as much advance notice as possible and turn the lights back on as soon as we can!



## PSE is taking proactive steps to minimize the risk of power outages during construction

To ensure that customers have continuous, reliable power, the electricity we use every day is usually supplied through more than one transmission line. This is done to ensure that if one of the lines goes out for any reason, there is a back-up to prevent your electrical service from being interrupted.

Because one of the transmission lines will be de-energized due to construction, we've taken proactive measures to avoid outages:

- We scheduled this work during the late spring, summer, and early fall to avoid storm season.
- We trimmed trees near and farther along our transmission lines in advance of construction to reduce the chance of a tree-related power outage.
- Our crews will be on-site and able to respond quickly to repair nearby equipment in the small chance there is an outage.

### What is a transmission line?

Transmission lines are key elements in the electrical distribution system. The lines safely transport high voltage electricity from power generation sources like dams and wind generating facilities to substations in local communities. Transmission normally takes place at voltages of 55 kV and higher.

### Here's what to expect:

**What:** Work includes rebuilding an existing 115 kV transmission line by replacing the existing structures with new wooden poles and new, higher-capacity 115 kV conductor (wire).

**Where:** From Foss Corner substation along NE Gunderson Road to Miller Bay substation. From Miller Bay substation along Miller Bay Rd NE and Suquamish Way NE to Agate Pass. Across Agate Pass, cross-country to SR-305 and down to Port Madison substation. See project map for details.

**Who:** Crews from PSE and our contractor crews

**When:** Late April to mid-September on Kitsap peninsula; July to mid-September on Bainbridge Island

**Note:** Work hours are subject to change. Night and weekend work may be required to stay on schedule.

**We're committed to listening to our customers, maintaining an informed and open conversation about our work, and being responsive to customer needs.**



To learn more, visit  
[pse.com/bainbridge](https://pse.com/bainbridge)



Barry Lombard,  
PSE project manager  
1-888-404-8773



Email [info@psebainbridge.com](mailto:info@psebainbridge.com)  
with your questions and comments.