

OWNER OR OCCUPANT
ADDRESS
CITY, STATE ZIP

Bainbridge Island electric reliability upgrades

Dec. 16, 2015

In an ongoing effort to deliver safe and dependable energy to you and your neighbors, Puget Sound Energy will be replacing two miles of aging copper wire with tree wire. By installing tree wire in other locations, we have helped reduce power outages related to falling tree branches by up to 70 percent. Once the work is completed, it will improve the reliability of the energy we supply to your community.

We are committed to completing the work safely and efficiently, and our crews will do their best to reduce impacts to nearby neighbors. However, there may be some noise and traffic impacts, and **some customers may experience a temporary interruption of power as part of this work.**

Work details (Project #101080292)

- Who:** Electric crews from PSE and Potelco
What: Replacing existing power lines with tree wire and replacing some power poles
When: Starting as early as Dec. 28 and lasting for approximately two months (work schedule is dependent on weather)
Where: Northern region of Bainbridge Island from Northeast Day Road to Northeast Hidden Cove Road (see project map on back)

What you can expect

- Traffic control will guide vehicles through the work zone
- There will likely be noise from trucks and heavy machinery
- **Some customers may experience a temporary interruption of power during this time. We will notify those impacted customers ahead of time.**

What is tree wire?

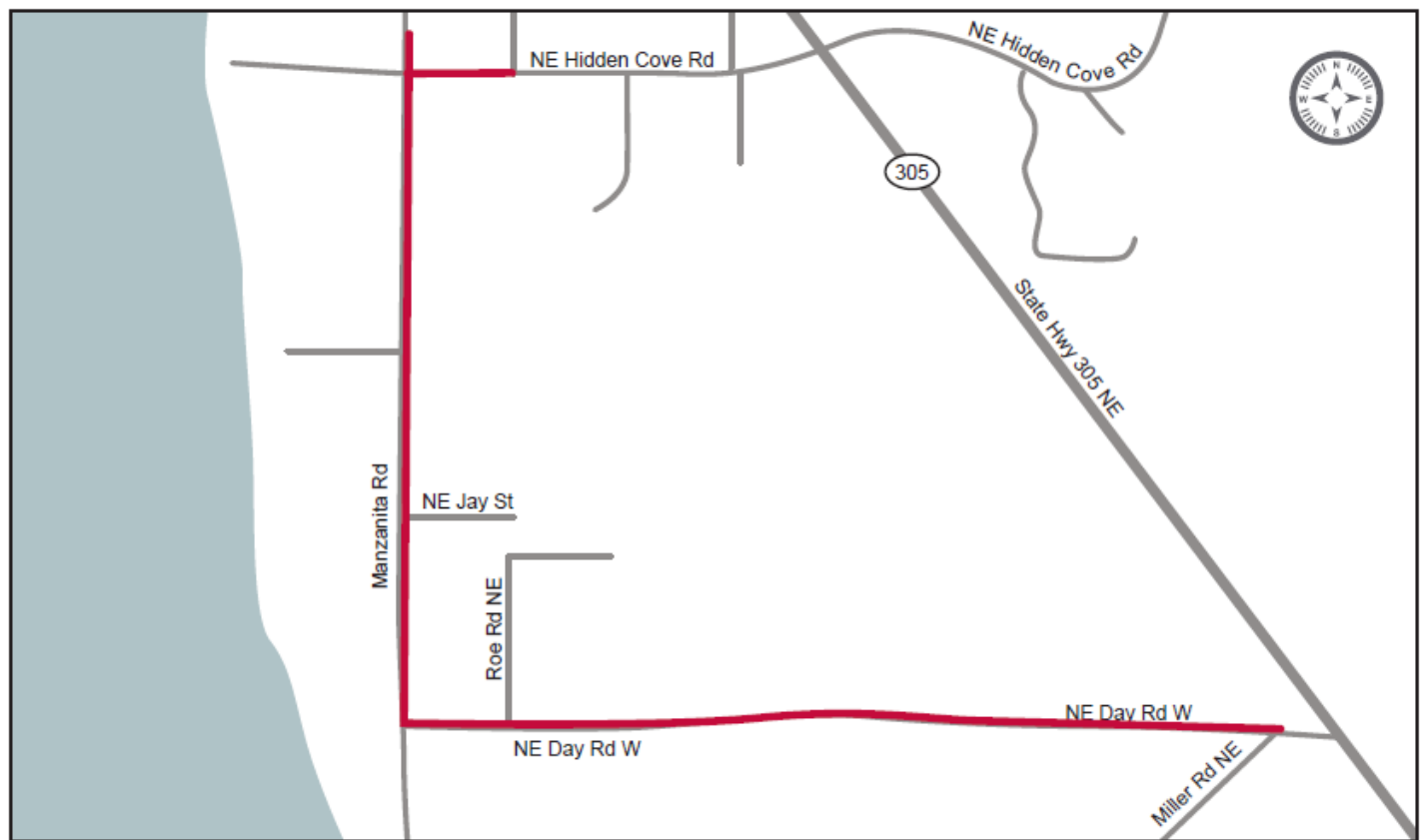
Tree wire is a specially coated overhead wire, which prevents an electric short in the line (and subsequent outage) in the event that a tree limb falls into a line. Tree wire is very useful at preventing outages in areas with many trees. Although it does not prevent outages caused by an entire tree falling into a power line, tree wire can significantly lower the frequency of tree-related power outages in your community.


We are proud to serve in your community and aim to complete the work with as little disruption as possible. Thank you for your patience as we work to complete this project. If you have any questions or concerns, please contact me at the phone number or email below.

Kelley O'Brien, Project Manager
(425) 417-8531 | kelley.o'brien@pse.com

pse.com/bainbridge

Bainbridge Tree Wire Project



 Tree wire installation route

