

PSE on bainbridge island

Winslow Tap transmission rebuild

Project overview

PSE plans to rebuild the existing 4.5 mile Winslow Tap transmission line. The Winslow Tap is the only transmission line that serves the Winslow substation that supplies power to 3,500 homes and businesses on the south end of the island.

What does the project involve?

We plan to rebuild the aging infrastructure by replacing the poles and equipment and installing new conductor (wire). We'll also improve safety and access along the existing corridor so we can continue to serve customers reliably well into the future.

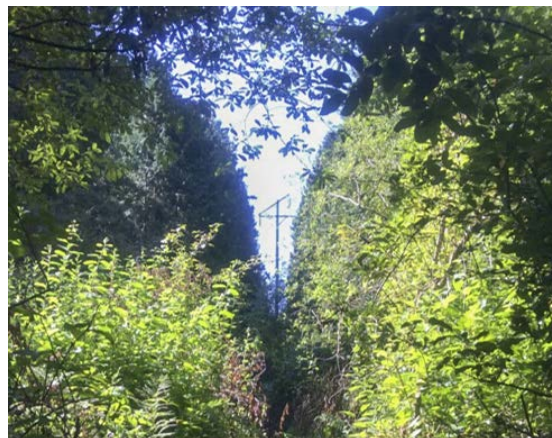
Why is the project needed?

The transmission line was built in 1960 and some of its equipment is nearing end of useful life and needs to be replaced.

In addition, the line is in a heavily-vegetated corridor with difficult terrain, which makes outage response challenging.

Project benefits

By replacing the aging infrastructure, improving access and reducing the number of trees falling into the lines, we'll improve safety and reduce outage durations.



Pictured: Vegetation in the Winslow Tap corridor



Pictured: The existing Winslow Tap corridor, which has 1960-era equipment nearing the end of its useful life that needs to be replaced

Preliminary project schedule

Our preliminary schedule is to have the rebuilt transmission line in-service by 2023. As we complete fieldwork and permitting, we'll make best efforts to accelerate this schedule.

- Fieldwork and engineering: 2020-2021
- Real Estate and permitting: 2020-2022
- Construction and restoration: 2022-2023

Committed to keeping you informed

We're in the early stages of this project, and we're committed to keeping property owners informed of our progress. Please reach out to us if you have questions.

Our plan to improve electric reliability

The project is one component of a package of projects designed for Bainbridge Island. To learn about how this project fits into the overall solution, visit pse.com/bainbridge.

Project map



Winslow Tap 115 kV transmission line
Bainbridge Island



pse.com/bainbridgewt



info@psebainbridge.com



1-888-878-8632